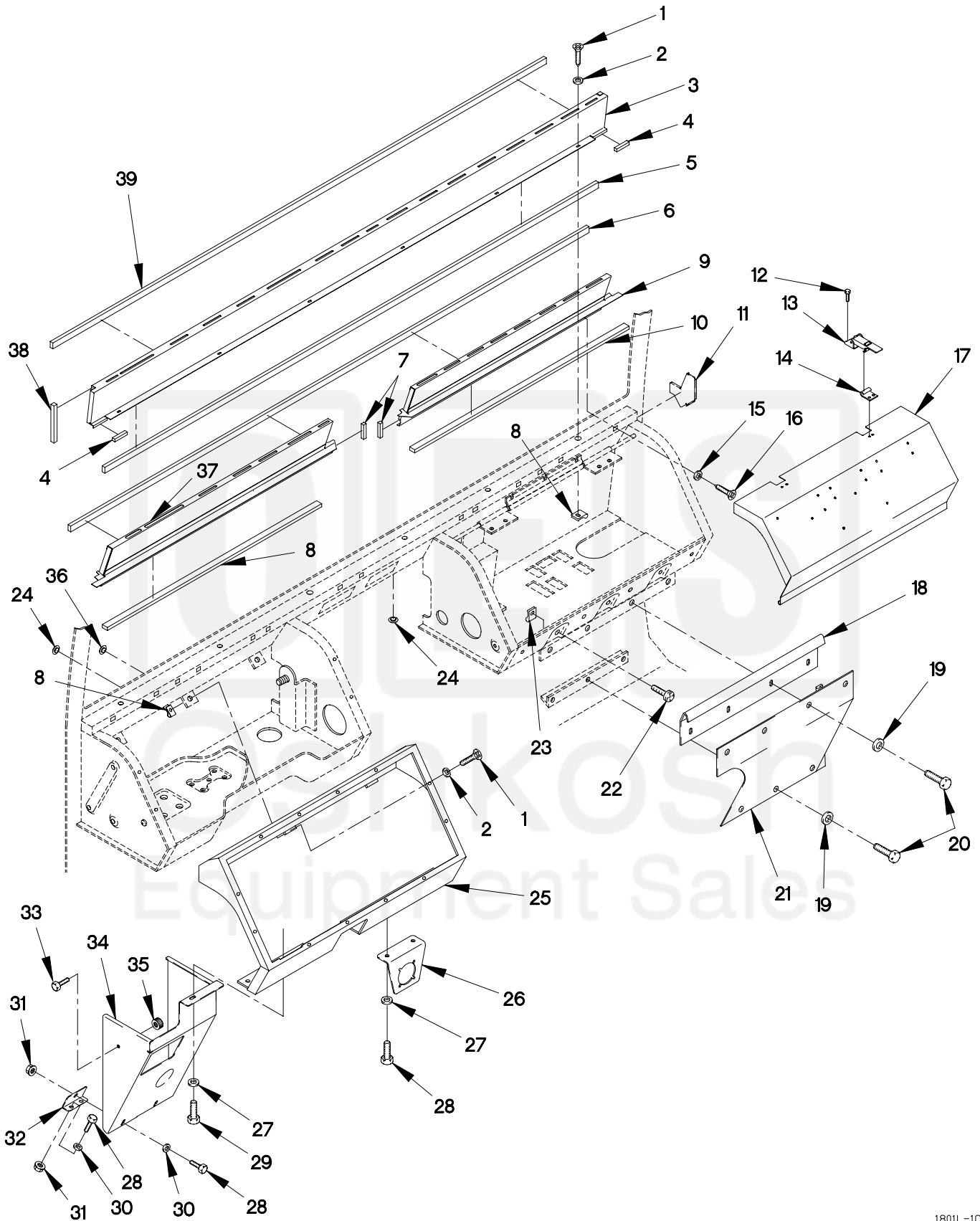


SECTION II

TM 9-2320-366-24P-1



1801L-1C

FIGURE 248. DASHBOARD

SECTION II

TM 9-2320-366-24P-1

(1) ITEM NO	(2) SMR CODE	(3) CAGEC	(4) PART NUMBER	(5) DESCRIPTION AND USABLE ON CODE (UOC)	(6) QTY
GROUP 1801: BODY,CAB,HOOD,AND HULL ASSEMBLIES FIG.248 DASHBOARD					
1	PAOZZ	19207	12414310-046	SCREW,TAPPING M4.8 X 19..... UOC:MAA,MAB,MAE,MAF,MAG,MAH,MAK,MAL, MAM,MWB,MWF,MWH,MWL,	12
1	PAOZZ	19207	12414310-046	SCREW,TAPPING..... UOC:MAC,MAJ,MWC,MWJ,	9
2	PAOZZ	D8286	DIN9021-5,3-100H V-C-B3B	WASHER,FLAT M5.3..... UOC:MAA,MAB,MAE,MAF,MAG,MAH,MAK,MAL, MAM,MWB,MWF,MWH,MWL,	14
2	PAOZZ	D8286	DIN9021-5,3-100H V-C-B3B	WASHER,FLAT M5.3..... UOC:MAC,MAJ,MWC,MWJ,	11
3	PAOZZ	19207	12422614	SHIELD,HEATER DUCT..... UOC:MAA,MAB,MAE,MAF,MAG,MAH,MAK,MAL, MAM,MWB,MWF,MWH,MWL,	1
4	MOOZZ	0FW39	12420420-2X85	SEAL,URETHANE MAKE FROM SEAL P/N 12420420-002 (0FW39) X 85 MM LONG... UOC:MAC,MAJ,MWC,MWJ,	2
5	MOOZZ	0FW39	12420420-1X2200	SEAL,URETHANE MAKE FROM SEAL P/N 12420420-001 (0FW39) X 2200 MM LONG..... UOC:MAA,MAB,MAE,MAF,MAG,MAH,MAK,MAL, MAM,MWB,MWF,MWH,MWL,	1
6	MOOZZ	0FW39	12420420-2X1800	SEAL,URETHANE MAKE FROM SEAL P/N 12420420-002 (0FW39) X 2200 MM LONG..... UOC:MAC,MAJ,MWC,MWJ,	1
7	MOOZZ	0FW39	12420420-2X45	SEAL,URETHANE MAKE FROM SEAL P/N 12420420-002 (0FW39) X 2200 MM LONG..... UOC:MAC,MAJ,MWC,MWJ,	1
8	PAOZZ	19207	12419831-001	NUT,SHEET SPRING..... UOC:MAA,MAB,MAE,MAF,MAG,MAH,MAK,MAL, MAM,MWB,MWF,MWH,MWL,	12
8	PAOZZ	19207	12419831-001	NUT,SHEET SPRING..... UOC:MAC,MAJ,MWC,MWJ,	9
9	PAOZZ	0FW39	12420495-009	SHIELD,HEATER DUCT..... UOC:MAC,MAJ,MWC,MWJ,	1
10	MOOZZ	0FW39	12420420-1X1900	SEAL,URETHANE MAKE FROM SEAL P/N 12420420-001 (0FW39) X 1900 MM LONG..... UOC:MAC,MAJ,MWC,MWJ,	2

SECTION II

TM 9-2320-366-24P-1

(1) ITEM NO	(2) SMR CODE	(3) CAGEC	(4) PART NUMBER	(5) DESCRIPTION AND USABLE ON CODE (UOC)	(6) QTY
11	PAOZZ	19207	12421490	DUCT ASSEMBLY,AIR C..... UOC:MAC,MAJ,MWC,MWJ,	2
12	PAOZZ	19207	12414310-033	SCREW,TAPPING M4.2 X 9.5.....	4
13	PAOZZ	94222	91-99-111-12	LATCH,SAFETY,HOOK.....	2
14	PAOZZ	94222	K4-2338-12	LATCH,RIM.....	2
15	PAOZZ	19207	12414473-008	WASHER,FLAT M3.7..... UOC:MAC,MAJ,MWC,MWJ,	8
16	PAOZZ	19207	12414310-026	SCREW,TAPPING M3.5 X 19..... UOC:MAC,MAJ,MWC,MWJ,	8
17	PAOZZ	19207	12420744	COVER,DISTRIBUTION.....	1
18	PAOZZ	19207	12420743	COVER,KICK PANEL EX.....	1
19	PAOZZ	0FW39	12417975-006	SPACER,RING 6.4MM ID X 18.....	11
20	PAOZZ	15526	933-M6X12	SCREW,CAP,HEXAGON H M6 X 1 X 12....	7
21	PAOZZ	19207	12420494	HOUSING,PANEL,VEHIC.....	1
22	PAOZZ	19207	12414310-044	SCREW,TAPPING M8 X 13.....	3
23	PAOZZ	96906	MS90724-40	NUT,SHEET SPRING.....	3
24	PAOZZ	23540	411	INSULATOR,PLUG..... UOC:MAA,MAB,MAE,MAF,MAG,MAH,MAK,MAL, MAM,MWB,MWF,MWH,MWL,	2
24	PAOZZ	23540	411	INSULATOR,PLUG..... UOC:MAC,MAJ,MWC,MWJ,	4
25	PFOZZ	0FW39	12420958-007	BEZEL,INSTRUMENT MO.....	1
26	PAOZZ	0FW39	12422211	BRACKET,ANGLE.....	1
27	PAOZZ	19200	12524631-1	WASHER,FLAT M6.....	2
28	PAOZZ	15526	DIN933-M6X16-8.8 -A4C	SCREW,CAP,HEXAGON H M5 X .8 X 10...	8
29	PAOZZ	0FW39	12414419-056	SCREW,CAP,HEXAGON H M5 X .8 X 10...	4
30	PAOZZ	0FW39	12414473-032	WASHER,PLAIN.....	6
31	PAOZZ	84256	ALS3-610-4.2	NUT,PLAIN,CLINCH.....	6
32	PAOZZ	0FW39	12422622	BRACKET,MOUNTING.....	2
33	PAOZZ	19207	12414419-042	SCREW,MACHINE.....	1
34	PAOZZ	0FW39	12422619-001	COVER,ACCESS.....	1
35	PAOZZ	84256	ALS3-470-2.0	NUT,PLAIN,KNURLED.....	1
36	PAOZZ	23540	6591AA1	PLUG,PROTECTIVE,DUS.....	13
37	PAOZZ	19207	12420495-008	SHIELD,HEATER DUCT..... UOC:MAC,MAJ,MWC,MWJ,	1
38	MOOZZ	0FW39	12420420-3X175	SEAL,URETHANE MAKE FROM SEAL P/N 12420420-003 (0FW39) X 175 MM LONG.. UOC:MAA,MAB,MAE,MAF,MAG,MAH,MAK,MAL, MAM,MWB,MWF,MWH,MWL,	2
39	MOOZZ	0FW39	12422618X2200	SEAL,URETHANE MAKE FROM SEAL P/N 12422618 (0FW39) X 2200 MM LONG..... UOC:MAA,MAB,MAE,MAF,MAG,MAH,MAK,MAL, MAM,MWB,MWF,MWH,MWL,	1

END OF FIGURE